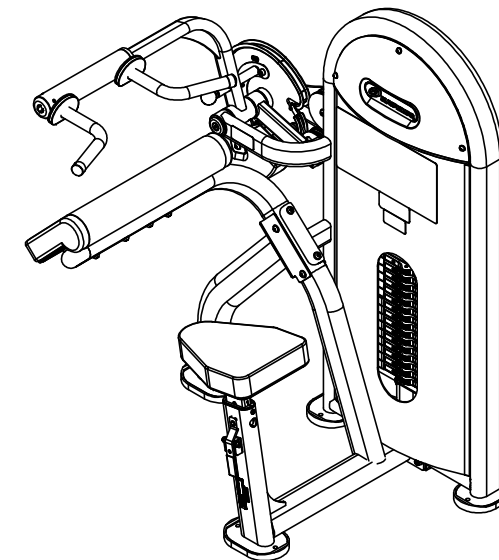
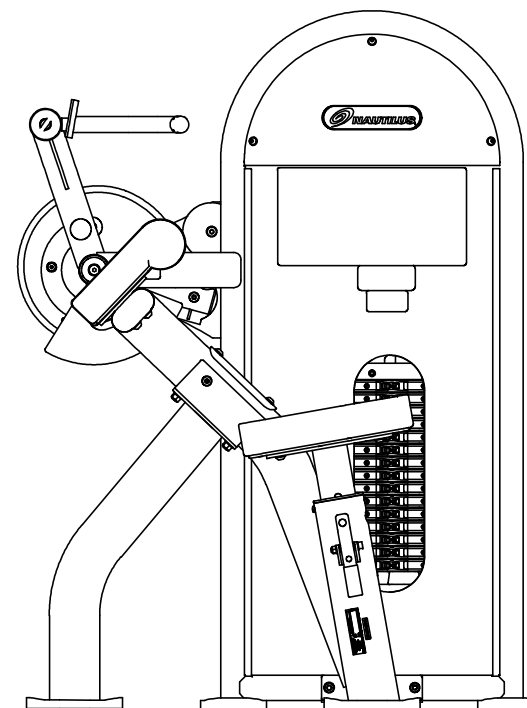
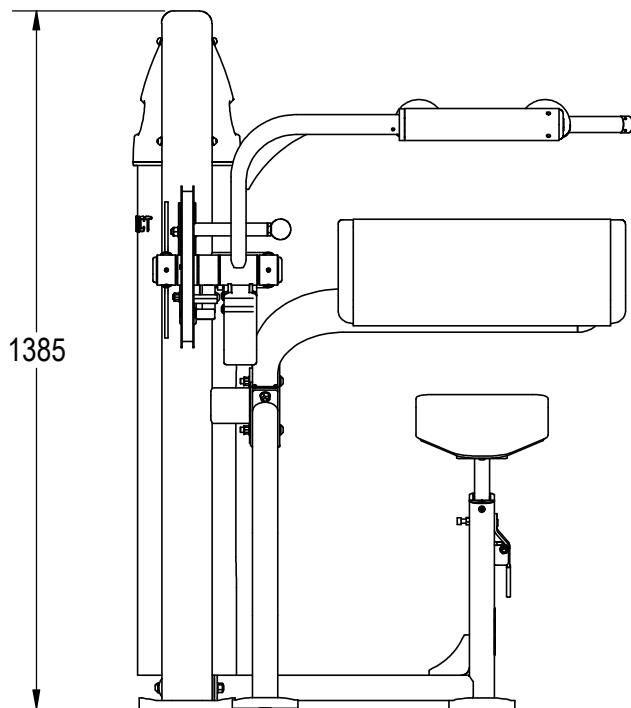
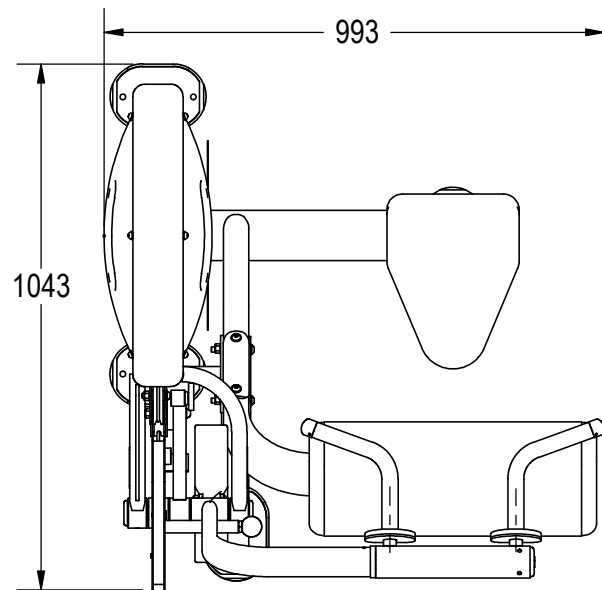


9 8 7 6 5 4 3 2 1

NOTES:

1. ASSEMBLE AND INSPECT PER SOP 620-7918..
2. INSTALL Kg STICKER AND AFFIX Lb STICKER TO INSIDE OF SHROUD WITH TAPE.
3. COLOR DICTATED BY THE SALES ORDER. REFERENCE THE MACHINES BOM FOR COMPONENTS CONTAINING -XX, -00XX AND -XXXXX.
  - a. COLOR: -XX COLOR DESIGNATOR AS SPECIFIED IN SOP 620-8222.
  - b. THE -XX CAN RESULT IN ONE COLOR FOR THE METAL SHROUD AND A DIFFERENT COLOR FOR THE METAL FRAME ALSO WITH A -XX LISTED ON THE BOM.
  - c. THE -00XX IS THE COLOR DESIGNATOR FOR UPHOLSTERY.
  - d. THE 5TH DESIGNATOR: "X" WITHIN -XXXXX DEFINES THE HEAD STRAP OR CUSTOM PRODUCTS BRAND. THIS IS SPECIFIED ON SALES ORDERS.
  - e. THE -XXXXX IS CREATED BY COMBINING THE -XX, -00XX AND THE 5TH DESIGNATOR.
  - f. ALL X'S SHOULD BE DEFINED ON THE SALES ORDER.

REVISION HISTORY				
REV	DATE	DESCRIPTION	ECO	BY
A	7/29/2016	INITIAL RELEASE	15472	AM



**DOCUMENT STATUS:**

NOTICE OF PROPRIETARY INFORMATION  
THIS DOCUMENT SHALL NOT BE REPRODUCED NOR SHALL THE INFORMATION CONTAINED HEREIN BE USED BY OR DISCLOSED TO OTHER EXCEPT AS EXPRESSLY AUTHORIZED BY CORE HEALTH & FITNESS, LLC.

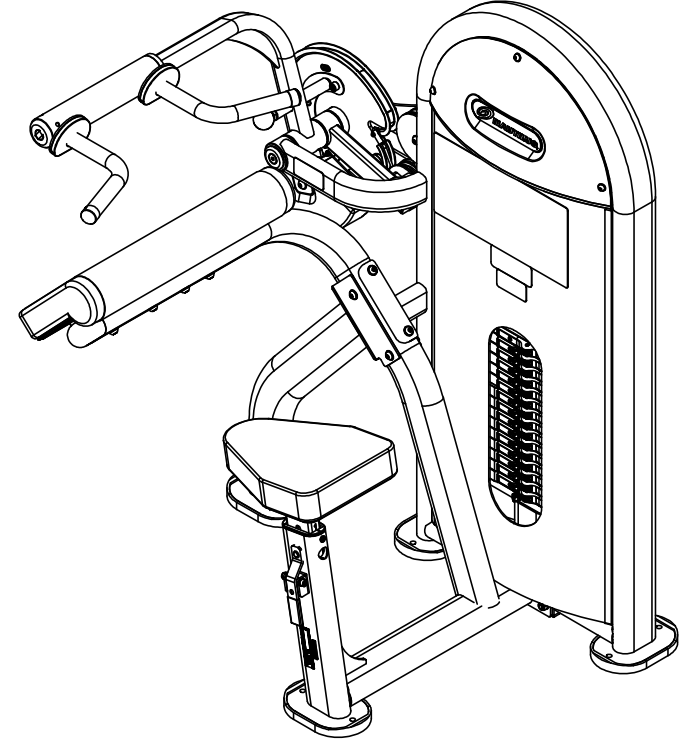
CLASS OF WORK	UNLESS OTHERWISE SPECIFIED DIMS ARE IN mm. TOLERANCES FOR MEASURE OF LENGTH ARE:							ANGLES = ±2°		
	0.5 to 3	>3 to 6	>6 to 30	>30 to 120	>120 to 400	>400 to 1000	>1000 to 2000	>2000		
FINE	±0.05	±0.05	±0.1	±0.15	±0.2	±0.3	±0.5	----		
MEDIUM	±0.1	±0.1	±0.2	±0.3	±0.5	±0.8	±1.2	±2		
COARSE	±0.2	±0.3	±0.5	±0.8	±1.2	±2	±3	±4		
VERY COARSE	----	±0.5	±1	±1.5	±2.5	±4	±6	±8		

<b>MATERIAL</b> SEE BOM	<b>THIRD ANGLE PROJECTION</b> 	
<b>FINISH</b> SEE NOTES	DRAWN	DATE
<b>VENDOR: IMPULSE</b>	INITIAL	DATE
P/N:	U.O.M.	MM

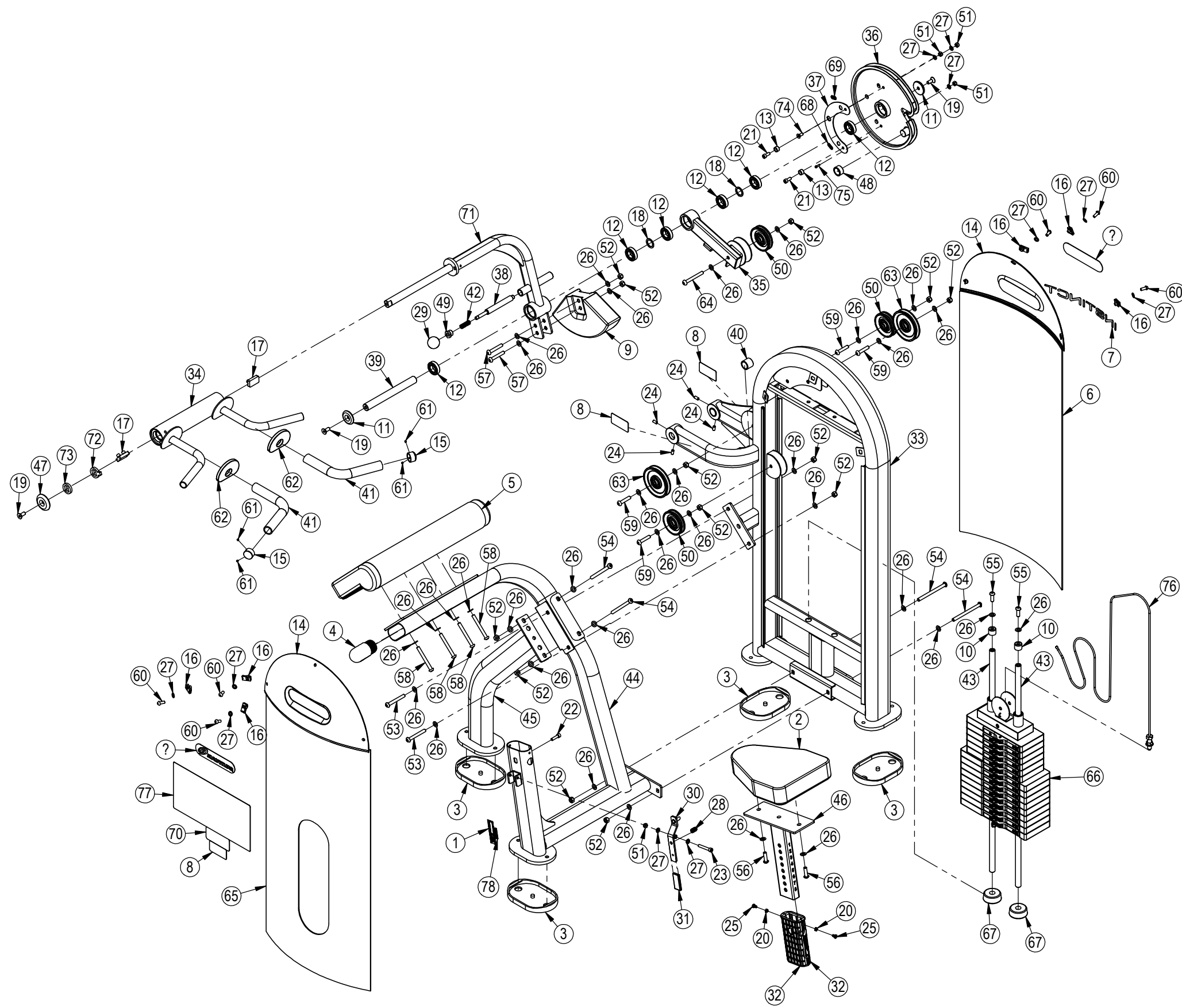
<b>CORE HEALTH &amp; FITNESS, LLC</b> 4400 NE 77th Ave., Suite 300 Vancouver, WA 98662		
CORE PART NO	REV	
<b>NL-D5120-29AGS</b>	<b>A</b>	
TITLE NL,DSS,BICEP/TRICEPS,LNL		
SCALE: 1:15	SHEET 1 OF 3	SHEET SIZE: B

9 8 7 6 5 4 3 2 1

9		8		7		6		5		4		3		2		1	
	ITEM NO.	PART NUMBER	DESCRIPTION	Q'TY.		ITEM NO.	PART NUMBER	DESCRIPTION	Q'TY.								
J	1	050-5457	Label, S/N, Non-Powered, Primary, Core H&F	1	46	730-1083	POST,ADJUSTMENT,EXTENSION,SEAT	1									J
	2	730-0194	PAD,SEAT,IN-B7201	1	47	730-1085	CAP, END TUBE, S5110	1									I
I	3	730-0216	PAD, FEET, BASE, IN-B7503	4	48	730-1087	SPACER,DIA 32MM,HEIGHT 16MM	1									I
	4	730-0223	CAP,LARGE,FRAME	1	49	730-1096	NUT,MACHINE,M20X1.5	1									H
H	5	730-0232	PAD,ARM REST,ASSY	1	50	730-1098	PULLEY ASSY,CABLE,DIA 89MM	3									H
	6	730-0233	SHROUD,REAR,WGT STK,LP	1	51	730-1103	NUT,M18X1.25,NYLOC,SS	4									I
I	7	730-0384	LOGO,INSTINCT	1	52	730-1104	NUT,M10X1.5,NYLOC,SS	13									I
	8	730-0385	STICKER,CAUTION,PINCH POINT	3	53	730-1109	SCREW,M10X1.5,80MM,BHC,HE,SS	2									H
H	9	730-0548	BLOCK,COUNTERBALANCE,IN-S5110	1	54	730-1112	SCREW,M10X1.5,130MM,BHC,HE,SS	4									H
	10	730-0565	CAP,RUBBER,ROD GUIDE WT STK	2	55	730-1118	SCREW,M10X1.5,30MM,BHC,HE,SS	2									G
G	11	730-0656	CAP,50MM OD	2	56	730-1119	SCREW,M10X1.5,35MM,BHC,HE,SS	2									G
	12	730-0673	BEARING,OD 47, ID 25,THK 12	6	57	730-1122	SCREW,M10X1.5,63MM,BHC,HE,SS	2									H
H	13	730-0679	STOPPER, OD 17MM, HGH 10.5MM	2	58	730-1125	SCREW,M10X90,BHC,SS	4									H
	14	730-0702	SHROUD,TOP,LP	2	59	730-1131	SCREW,M10X50,BHC,SS	4									G
G	15	730-0704	CAP,OUTSIDE,GRIP,25MM,AL	2	60	730-1138	SCREW,M8X1.25,20MM,BHC,HE,SS	6									G
	16	730-0845	SPEED NUT,U-STYLE CLIP-ON NUT,M8	6	61	730-1155	SCREW,10-32X3.2,SET	4									F
F	17	730-0858	BUMPER, 45X25	2	62	730-1159	BUMPER, IN-S5110	2									F
	18	730-0869	RETAINING RING,25MM ID,32MM OD	2	63	730-1165	PULLEY,ASSY,CABLE,DIA 114MM	2									G
H	19	730-0870	SCREW,M10X1.5,25MM,FHMS,HE,SS	3	64	730-1252	SCREW,M10X85,BHC,SS	1									F
	20	730-0885	NUT,M6X1.0,JAM,HEX,SS	2	65	730-1335	SHROUD,LNL,S5100	1									F
I	21	730-0889	SCREW,M8X1.25,20MM,SHCS,HE,SS	2	66	730-1398	WSA-LNL,180LB,15H,SP	1									E
	22	730-0891	SCREW,M8X1.25,30MM,SHCS,HE,SS	1	67	730-1448	STOP,BUMPER,WEIGHT PLATE, 25.4MM	2									E
E	23	730-0892	SCREW,M8X1.25,55MM,SHCS,HE,SS	1	68	730-1485-01	STICKER,ADJUST FUNCTION,INSTRUCTION	1									E
	24	730-0896	SCREW,M8X1.25,16MM,SET,FPS,HE,SS	4	69	730-1485-02	STICKER,ADJUST FUNCTION,INSTRUCTION	1									D
D	25	730-0899	Screw, M6x1.0, 12mm, PHM, PH, SS	2	70	730-1491	LABEL,INSTRUCTIONS,LOCK N LOAD	1									D
	26	730-0908	WASHER,PLAIN,M10,SS	34	71	730-1540	ASSY, ARM, IN-D5120	1									E
E	27	730-0910	WASHER,PLAIN,M8,SS	11	72	730-1544	WASHER, BICEP/TRICEP, KEYED, LOCK, 7.2MM THICK	1									E
	28	730-0911	SPING,COMPRESSION ,ADJ,HDL	1	73	730-1545	WASHER, BICP/TRICEP, KEYED, FLAT, 7.2MM THICK	1									D
D	29	730-0924	ASSY,BAR BALL END CAP, Ø30	1	74	730-1943	SCREW,M8X20,FHM,HK,SS	1									D
	30	730-0930	WELD,HANDLE,EXTENSION,ADJ	1	75	730-2133	SCREW,M4X0.7,15MM,SHCS,HE,SS	1									C
C	31	730-0935	GRIP,SQUARE,ADJ HANDLE	1	76	730-2534	CABLE,ASSY,IN-D5120	1									C
	32	730-0936	ASSY,TUBE,INSERT,SLEEVE	2	77	730-7223-XXX	STICKER, PLACARD, INSTRUCTION, BC NAUT.	1									B
B	33	730-1015	WEIGHT STACK,FRAME	1	78	731-0335	STICKER, MADE IN CHINA, IP	1									B
	34	730-1017	ASSY, HANDLE, IN-D5120	1	79	731-7311	STICKER,NAUTILUS,DECO,45MMX191MM	2									C
C	35	730-1018	PIVOT,LEVERAGE ARM,PULLEY	1													C
	36	730-1019	CAM/ROTARY,IN-D5120	1													B
B	37	730-1020	STOP,ROM,IN-D5120	1													B
	38	730-1021	ASSY,PULL KNOB,ADJUSTMENT,PIN	1													A
A	39	730-1022	SHAFT,M25X192	1													A
	40	730-1023	BUMPER,SLEEVE,M32X28	1													
	41	730-1024	HANDLE,PVC,SLEEVE,GRIP	2													
	42	730-1025	ASSY,ANGLE ADJUSTMENT,SPRING	1													
	43	730-1078	GUIDE RODE,Ø19MMX935MM	2													
	44	730-1081	ASSY,MAIN FRAME	1													
	45	730-1082	ASSY,MAIN FRAME,LEG	1													



<b>CORE HEALTH &amp; FITNESS, LLC</b>		
4400 NE 77th Ave., Suite 300 Vancouver, WA 98662		
CORE PART NO	<b>NL-D5120-29AGS</b>	REV <b>A</b>
TITLE	<b>NL,DSS,BICEP/TRICEPS,LNL</b>	
SCALE: 1:15	SHEET 2 OF 3	SHEET SIZE: B



<b>CORE HEALTH &amp; FITNESS, LLC</b>		
4400 NE 77th Ave., Suite 300 Vancouver, WA 98662		
CORE PART NO	<b>NL-D5120-29AGS</b>	REV <b>A</b>
TITLE NL,DSS,BICEP/TRICEPS,LNL		
SCALE: 1:15	SHEET 3 OF 3	SHEET SIZE: B